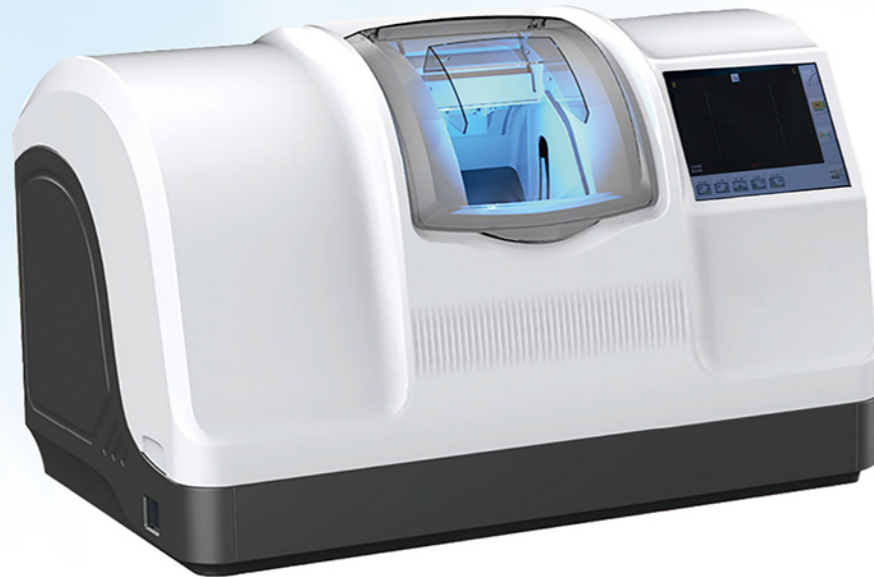




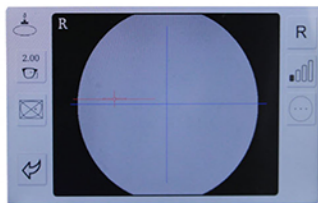
CANTON OPTICS

# 3D PATTERNLESS LENS EDGER

ALE-9900 / ALE9900A / ALE-9900AK

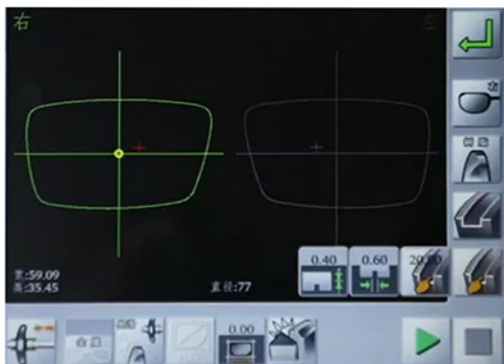


3D tracer obtains precise lens image in 1 second on 8-inch monitor.  
Suitable for different material lenses: **PC lens, Glass lens, High-index lens and CR-39 lens.**



Scanning light source is adjustable, four levels.

Support optical center and geometric center.



Auto & manual beveling are both available.

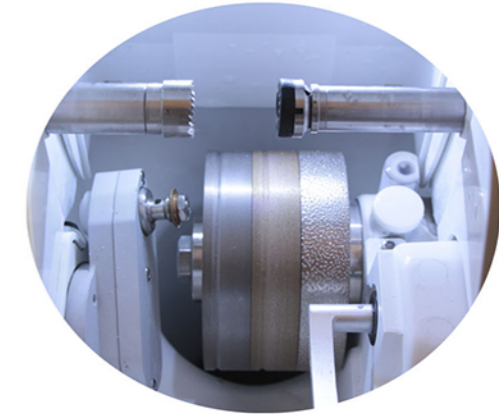
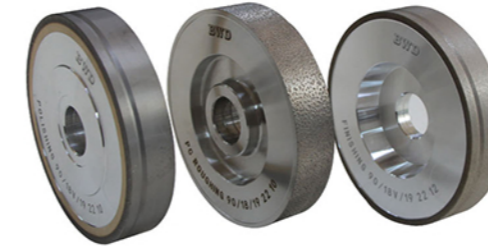
Grooving width, depth and position could be set manually.

V polishing and flat polishing are both available.

**ALE-9900A:** PC wheel, FV fine wheel and FV polishing wheel

**ALE-9900:** PC wheel, FV fine wheel, **Roughing Wheel (Glass)** and FV polishing wheel

**ALE-9900AK:** PC wheel, FV fine wheel and FV polishing wheel, **with grooving function**



## Specifications:

### Edging System:

1. Wheel Diameter: 90mm
2. Clamping Pressure: adjustable  
3 different levels
3. Lens Size: DIA 22-80mm
4. Screen: 8-inch capacitive touch screen
5. Voltage: AC 220V/110V, 50/60Hz
6. Power: 550W
7. Dimension: 680mm\*460mm\*450mm
8. Weight: 60kgs

### Tracing System:

1. Touch screen: 7-inch capacitive screen
2. Screen Tilt Angle: 20°-100°
3. Voltage: AC 220V/110V 50/60H
4. Power: 60W
5. 1 scanner could connect 2 lens edgers
6. Dimension: 230mm\*370mm\*200mm
7. Weight: 5kg

**SHANGHAI CANTON OPTICS EQUIPMENT CO., LTD.**

No. 919-999, JINLIU ROAD, JINSHAN INDUSTRIAL ZONE, JINSHAN DISTRICT, SHANGHAI, CHINA

Tel: +86-21-58588205 Fax: +86-21-56627322

Web: [www.chinacanton.com](http://www.chinacanton.com)

Email: [sales@chinacanton.com](mailto:sales@chinacanton.com)