

VX 40

Complete prescription
analysis in 30 seconds





ID: 00008 - 07_05_2022 - 12:22
TEMP 8 Init lenses

	Résumé			MEASURE		RETRACTION	
	LM	D	G				
S	+0.00	+0.00	0°	+0.00	60.00	+0.00	+0.00
WF Ref							
ci 10	S	C	A	ADD	Pd	S	C
	+0.25	-1.25	170°	+0.00	64.00	+0.50	-2.00
Final	S	C	A	ADD	Pd	S	C
	+0.25	-1.00	170°	+0.00	64.00	+0.25	-2.00
Sans correction	S	C	A	ADD	Pd	S	C
	+0.00	+0.00	0°	+0.00	60.00	+0.00	+0.00

VA	LM	Final	WF	Sans correction
D		1	1.1	
G		1.1	1.1	
blino		1.1	0.9	

Distance verre-œil 12mm Convention



Full detailed analysis of a frame

Visionix Wavefront technology allows you to have a full detailed analysis of a frame at the push of a button. Experience the next generation auto lensmeter with the VX 40. The VX 40 can detect and analyze single vision, bifocals, and progressive lenses and is compatible with all lens technologies and brands.

One-Touch Lens Analysis in 30 seconds

FULLY AUTOMATED

The VX 40 is fully automated. After the operator places the frame and initializes the start procedure, lens analysis and measurement is completely automatic. Even left / right eye movement requires no user input.

EASY TO USE

The unique lens holder system allows for fast insertion of the frame with only one hand! After pushing the start button, the whole process works on it's own. The VX 40 allows you to spend more time with your patients and less time on analysis.

AUTOMATIC LENS ANALYSIS

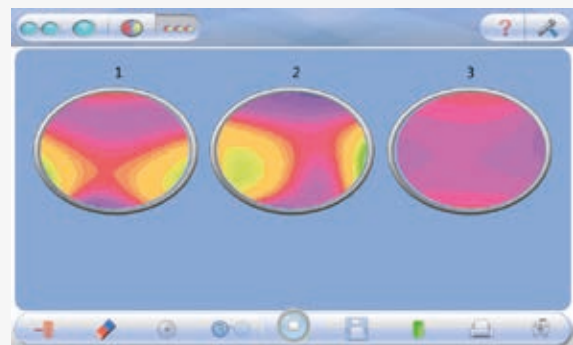
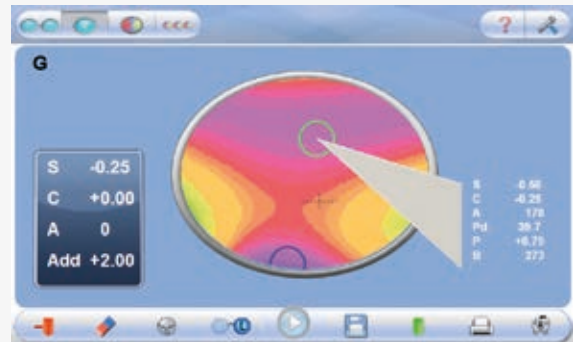
The VX 40 detects all types of lenses including bifocals, progressives, freeform, and single vision lenses. It is compatible with virtually every lens technology and brand.

COMPLETE VISUAL ANALYSIS

The VX 40 analyzes progressive and freeform lenses and then conveys the measurements to the operator in the form of a visual topographic map of the power ranges across the lens. These lens types no longer have to be a mystery to you.

SIDE BY SIDE PROGRESSIVE LENS ANALYSIS

The lens is studied completely, which allows for the operator to pick any point on the lens to verify the power and accuracy of the manufacturing. Compare and analyze even freeform progressive lenses and show your patients the differences between different progressive lens designs.



Connect to the Visionix Digital Refraction Suite and other Devices / EMR!



EHR/EMR
CAPABLE

Technical specifications

GENERAL DATA:

WIDTH	220 mm (8.66 in)
DEPTH	240 mm (9.44 in)
HEIGHT	455 mm (17.90 in)
WEIGHT	9 kg (19.8 lbs)
VOLTAGE	115 V - 230 V 50 Hz - 60 Hz
STANDARDS	CE

	VX 40
	MEASURABLE RANGE
Number of analyzed points	Up to 1350
Sphere power	-15 ~ +10D (step 0.01, 0.06, 0.125, 0.25D)
Cylinder power	0-10D (step 0.01, 0.06, 0.125, 0.25D)
Cylinder axis	0-180° (step 1°)
Addition power	0-± 3.5D (step 0.01, 0.06, 0.125, 0.25D)
Prism power	0-± 10 Δ (step 0.01 Δ)
PD measurement	Mono / Bino
Cylinder	-, +
	GENERAL
Printer	Internal
Screen	LCD/16M colours, 7"
Light source	LED - 730 nm
Working conditions	10 to 40°C
Data output	RS-232, Bluetooth



INNOVATION TO UNLOCK YOUR POTENTIAL

LUNEAU TECHNOLOGY SAS

2 Rue Roger Bonnet, 27340 Pont-de-l'Arche - France
Tél. + 33 232 989 132 - Fax + 33 235 020 294
contact@visionix.com

www.visionix.com